

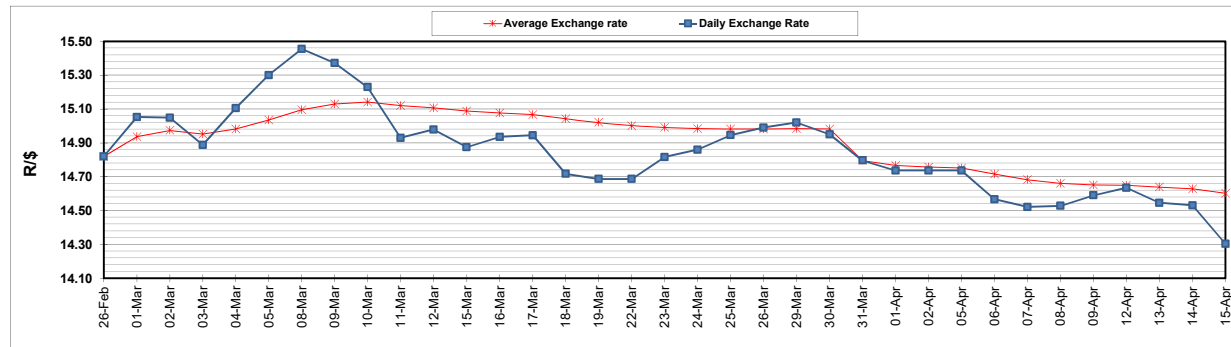
	PETROL 95 ULP	PETROL 93 ULP & LRP	DIESEL 0.05%	DIESEL 0.005%	ILL. PAR.
GAUTENG PUMP PRICE (SA c/l) AS FROM 07/04/2021	1,732.000	1,710.000	-	-	-
WHOLESALE PRICE (SA c/l) AS FROM 07/04/2021	-	-	1,477.620	1,480.020	880.488
SINGLE NATIONAL MAXIMUM RETAIL PRICE	-	-	-	-	1,106.000
BASIC FUEL PRICE - 15/04/2021 (SA c/l)	715.980	701.289	659.715	663.407	645.768
PRESS RELEASE CONTRIBUTION TO BFP 07/04/2021 - 15/04/2021 (SA c/l)	736.170	724.170	690.630	693.030	667.128
UNIT OVER/(UNDER) RECOVERY - 15/04/2021 (SA c/l)	20.190	22.881	30.915	29.623	21.360
AVERAGE BASIC FUEL PRICE 31/03/2021 - 15/04/2021	710.599	696.019	644.026	646.907	626.927
AVERAGE UNIT OVER/(UNDER) RECOVERY 31/03/2021 - 15/04/2021	(4.012)	0.651	31.188	31.540	26.035

### ANALYSIS MOVEMENT OF AVERAGE OVER/(UNDER) RECOVERY

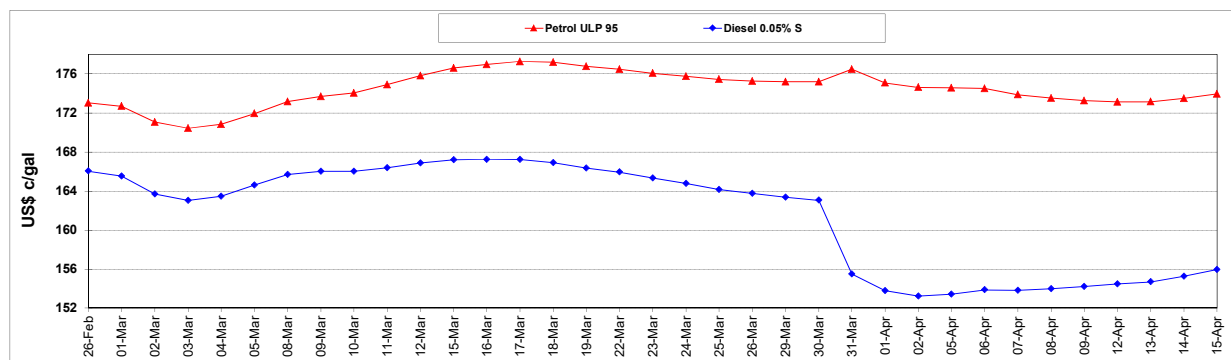
	PETROL 95	PETROL 93	DIESEL 0.05%	DIESEL 0.005%	ILL. PAR.
- MOVEMENT IN INTERNATIONAL PRODUCT PRICES	(22.538)	(17.495)	14.396	14.674	9.689
- MOVEMENT IN EXCHANGE RATE	18.526	18.146	16.791	16.866	16.345
AVERAGE UNIT OVER/(UNDER) RECOVERY 31/03/2021 - 15/04/2021	(4.012)	0.651	31.188	31.540	26.035

### R/\$ EXCHANGE RATE - (R/\$14.3033 - 15/04/2021)

#### EXCHANGE RATE USED IN BASIC FUEL PRICE



#### INTERNATIONAL PRODUCT PRICES OF BASKET USED IN BASIC FUEL PRICE



#### BASIC FUEL PRICE IN SA CENTS PER LITRE

